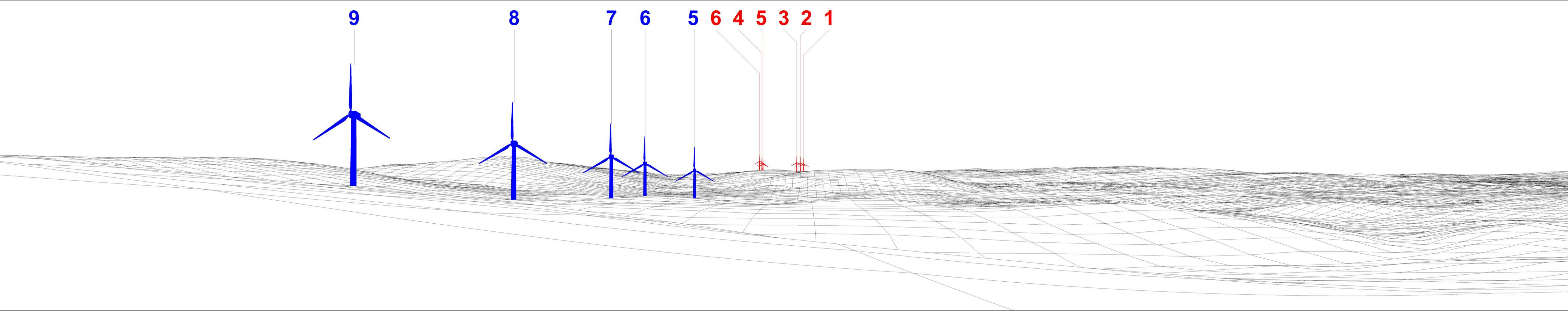


CLUNAHILL WIND FARM, CO. TYRONE

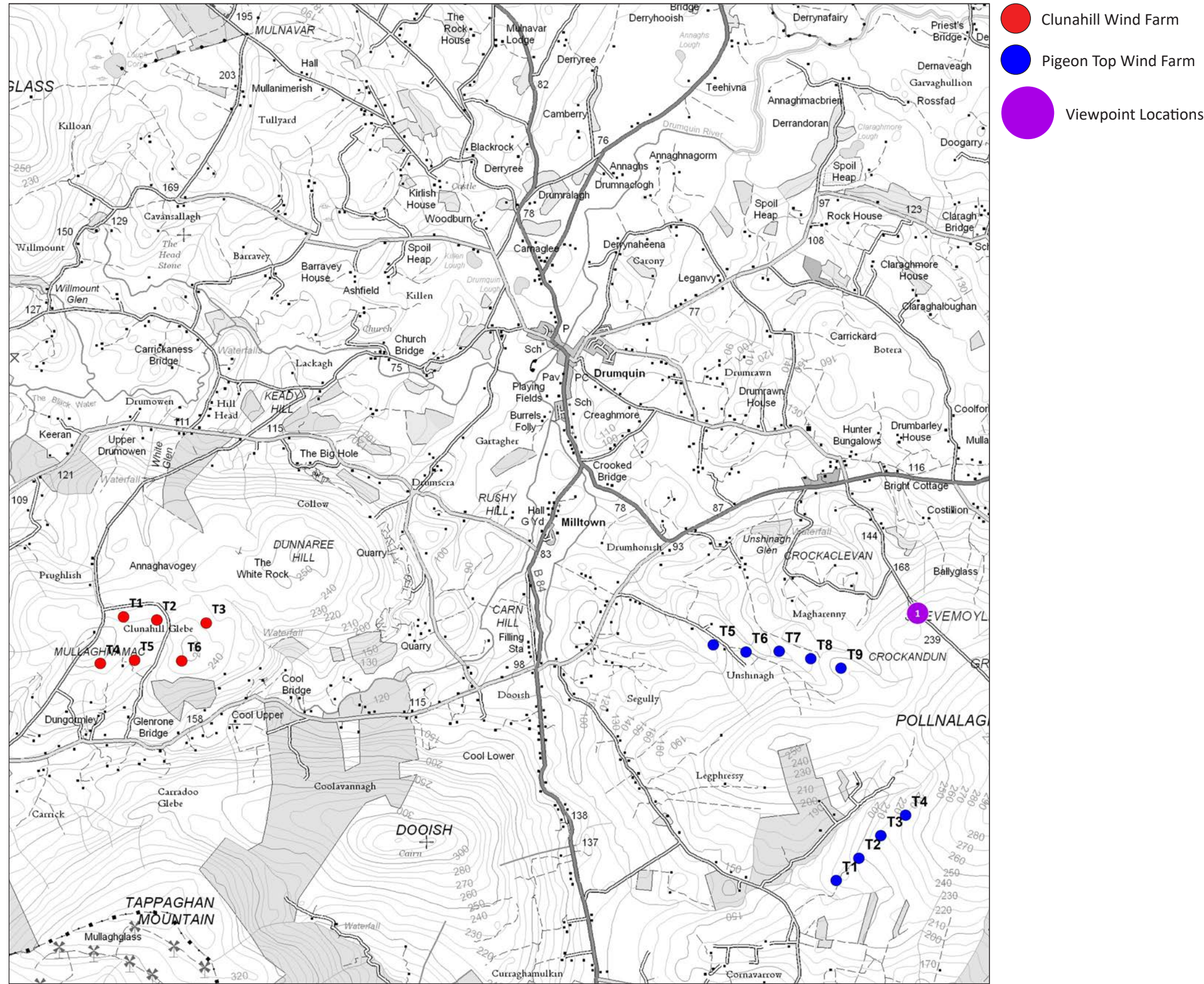
VISUAL ASSESSMENT - COMPARATIVE PHOTOMONTAGES

JUNE 2023 / PROJECT NO. 7459





Proposed Wireframe View



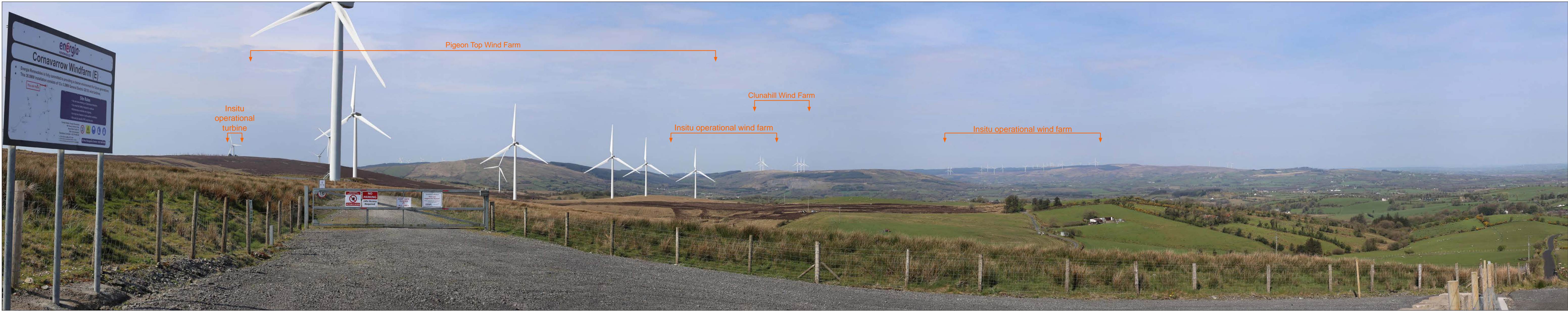
OS reference:	236241 E 371894 N
Eye level:	222.5m AOB
Direction of view:	227°
Distance to nearest wind turbine:	6.4km (Turbine 3)
Horizontal field of view:	90° (cylindrical projection)
Paper size:	420 x 297 mm (A3)
Correct printed image size:	390 x 94 mm
Camera:	Canon EOS 6D
Lens:	50mm (Canon EF 50mm f/1.8)
Camera height:	1.5m AGL
Date and time:	21/04/2022 10:54
Weather conditions:	Bright and Clear

Proposed Clunahill Wind Turbine Size	
Hub Height:	84m
Blade Diameter:	117m
Overall Height to Tip:	142.5m

Figure 2.0: Viewpoint 1 - Corradinna Road, Pollnalaght
Clunahill Wind Farm, Co. Tyrone



Existing View



Proposed View

OS reference:	236241 E 371894 N	Horizontal field of view:	90° (planar projection)	Camera:	Canon EOS 6D	Proposed Clunahill Wind Turbine Size	
Eye level:	222.5m AOB	Paper size:	541 x 597 mm (A1)	Lens:	50mm (Canon EF 50mm f/1.8)	Hub Height:	84m
Direction of view:	227°	Correct printed image size:	820 x 162 mm	Camera height:	1.5m AGL	Blade Diameter:	117m
Distance to Nearest Wind Turbine:	6.4km			Date and time:	21/04/2022 10:54	Overall Height to Tip:	142.5m

Figure 3.0: Viewpoint 1 - Corradinna Road, Pollnalaght
Clunahill Wind Farm, Co. Tyrone



Existing View



Proposed View

OS reference:	236241 E 371894 N	Horizontal field of view:	53.5° (planar projection)	Camera:	Canon EOS 6D	Proposed Clunahill Wind Turbine Size	
Eye level:	222.5m AOB	Paper size:	541 x 597 mm (A1)	Lens:	50mm (Canon EF 50mm f/1.8)	Hub Height:	84m
Direction of view:	227°	Correct printed image size:	820 x 197.5 mm	Camera height:	1.5m AGL	Blade Diameter:	117m
Distance to Nearest Wind Turbine:	6.4km			Date and time:	21/04/2022 10:54	Overall Height to Tip:	142.5m

Figure 4.0: Viewpoint 1 - Corradinna Road, Pollnalaght
Clunahill Wind Farm, Co. Tyrone



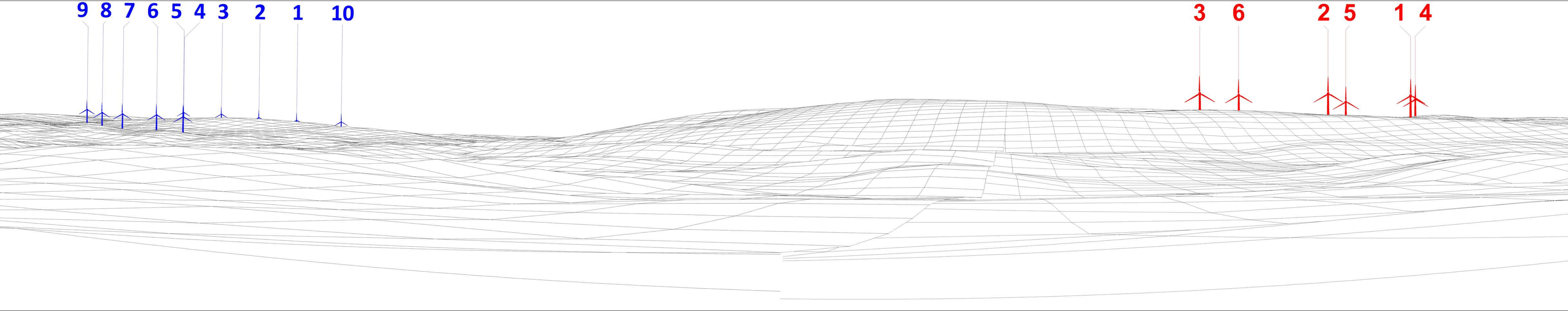
Consented Wind Farm as per Planning Reference - K/2007/0547/F. Wind Turbines 100m tip height



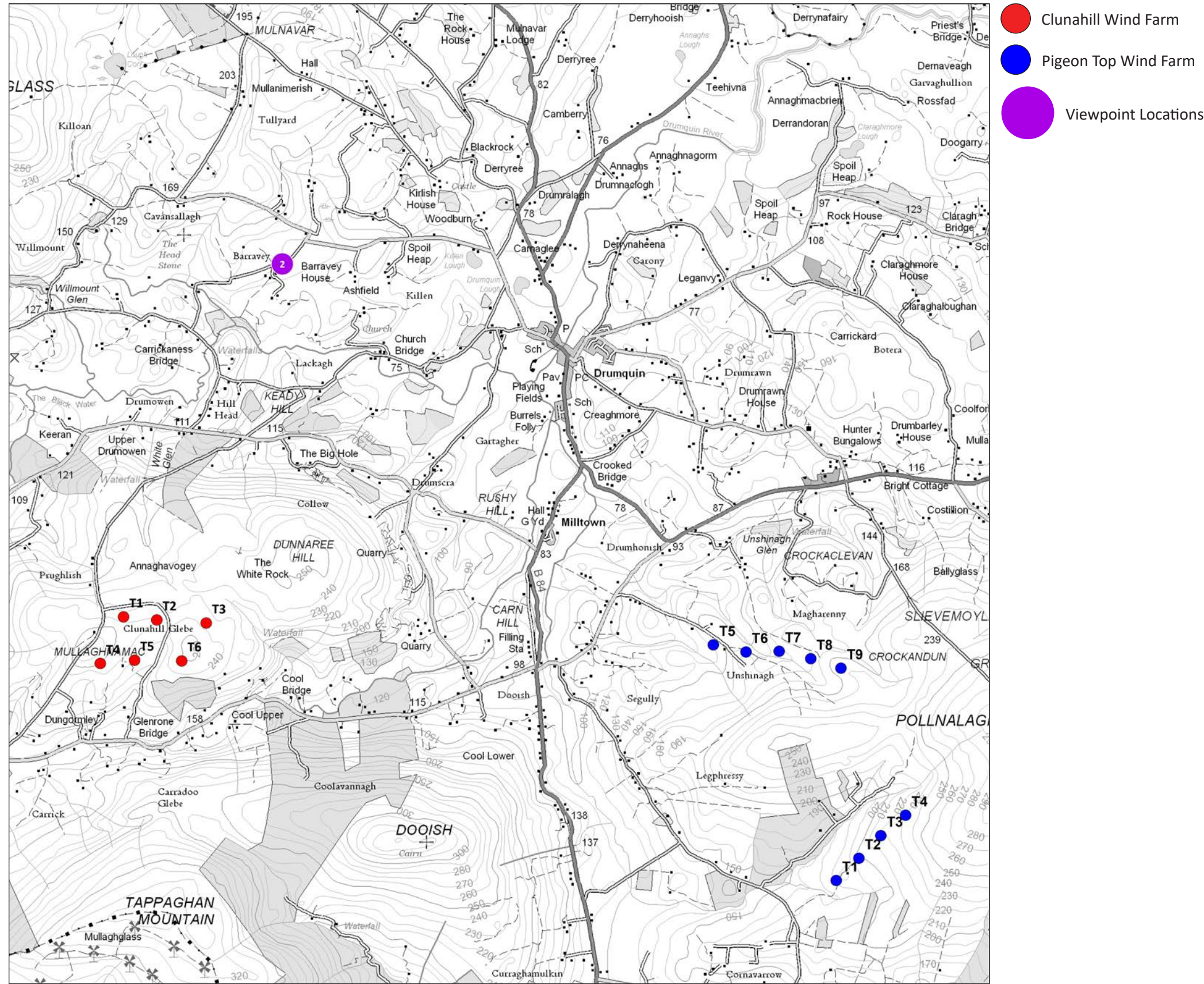
Proposed Wind Farm. Wind Turbines 142.5m tip height

OS reference:	236241 E 371894 N	Horizontal field of view:	53.5° (planar projection)	Camera:	Canon EOS 6D	Proposed Clunahill Wind Turbine Size	
Eye level:	222.5m AOB	Paper size:	541 x 597 mm (A1)	Lens:	50mm (Canon EF 50mm f/1.8)	Hub Height:	84m
Direction of view:	227°	Correct printed image size:	820 x 197.5 mm	Camera height:	1.5m AGL	Blade Diameter:	117m
Distance to Nearest Wind Turbine:	6.4km			Date and time:	21/04/2022 10:54	Overall Height to Tip:	142.5m

Figure 5.0: Viewpoint 1 - Corradinna Road, Pollnalaght
Clunahill Wind Farm, Co. Tyrone



Proposed Wireframe View



OS reference:	230471 E 375068 N
Eye level:	120.5m AOD
Direction of view:	172°
Distance to nearest wind turbine:	3.3km (Turbine 3)
Horizontal field of view:	90° (cylindrical projection)
Paper size:	420 x 297 mm (A3)
Correct printed image size:	390 x 94 mm
Camera:	Canon EOS 6D
Lens:	50mm (Canon EF 50mm f/1.8)
Camera height:	1.5m AGL
Date and time:	21/04/2022 11:15
Weather Conditions:	Bright and Clear

Proposed Clunahill Wind Turbine Size	
Hub Height:	84m
Blade Diameter:	117m
Overall Height to Tip:	142.5m

Figure 6.0: Viewpoint 2 - Glenbane Road, Barravey
Clunahill Wind Farm, Co. Tyrone



Existing View



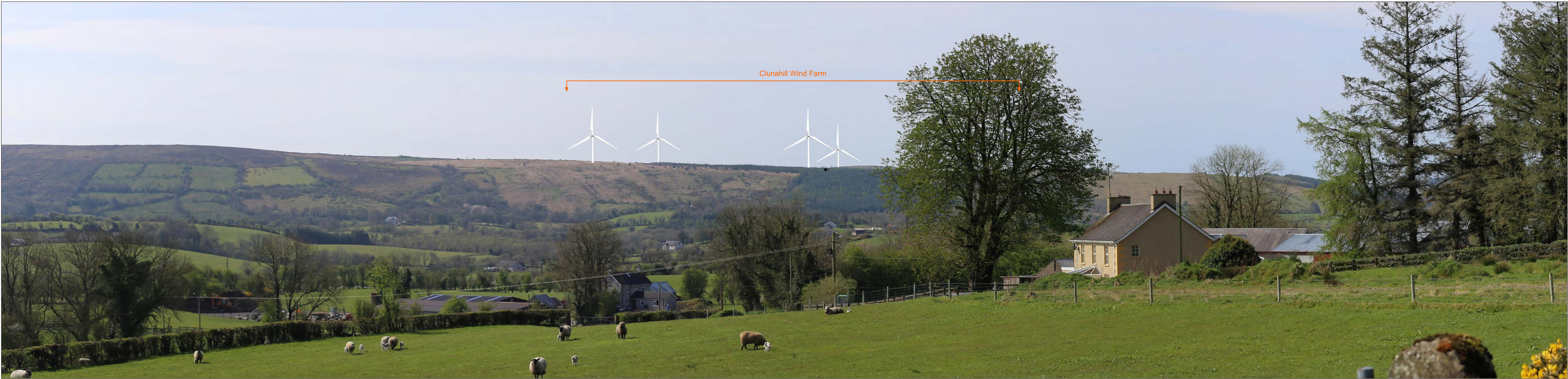
Proposed View

OS reference:	230471 E 375068 N	Horizontal field of view:	90° (planar projection)	Camera:	Canon EOS 6D	Proposed Clunahill Wind Turbine Size	
Eye level:	120.5m AOD	Paper size:	541 x 597 mm (A1)	Lens:	50mm (Canon EF 50mm f/1.8)	Hub Height:	84m
Direction of view:	172°	Correct printed image size:	820 x 162 mm	Camera height:	1.5m AGL	Blade Diameter:	117m
Distance to Nearest Wind Turbine:	3.3km			Date and time:	21/04/2022 11:15	Overall Height to Tip:	142.5m

Figure 7.0: Viewpoint 2 - Glenbane Road, Barravey
Clunahill Wind Farm, Co. Tyrone



Existing View



Proposed View

OS reference:	230471 E 375068 N	Horizontal field of view:	53.5° (planar projection)	Camera:	Canon EOS 6D	Proposed Clunahill Wind Turbine Size	
Eye level:	120.5m AOD	Paper size:	541 x 597 mm (A1)	Lens:	50mm (Canon EF 50mm f/1.8)	Hub Height:	84m
Direction of view:	172°	Correct printed image size:	820 x 197.5 mm	Camera height:	1.5m AGL	Blade Diameter:	117m
Distance to Nearest Wind Turbine:	3.3km			Date and time:	21/04/2022 11:15	Overall Height to Tip:	142.5m

Figure 8.0: Viewpoint 2 - Glenbane Road, Barravey
Clunahill Wind Farm, Co. Tyrone



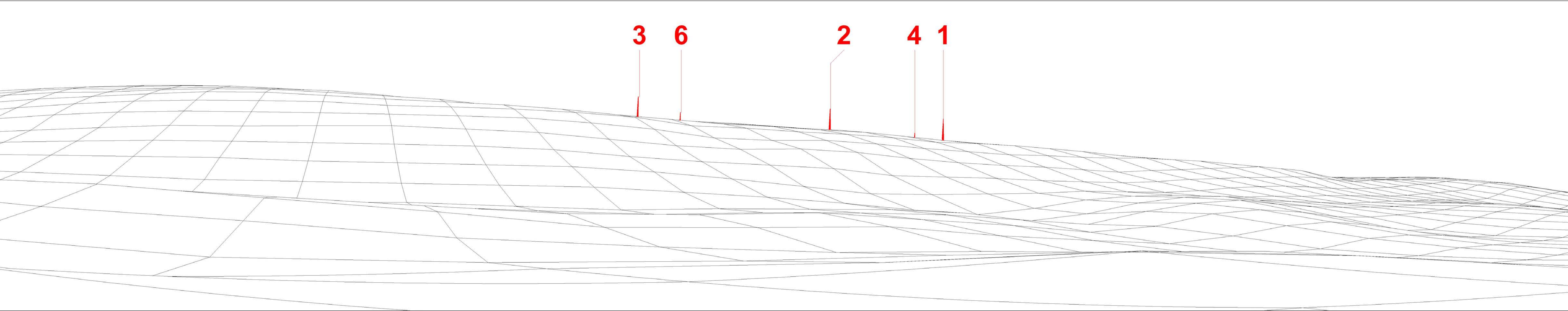
Consented Wind Farm as per Planning Reference - K/2007/0547/F. Wind Turbines 100m tip height



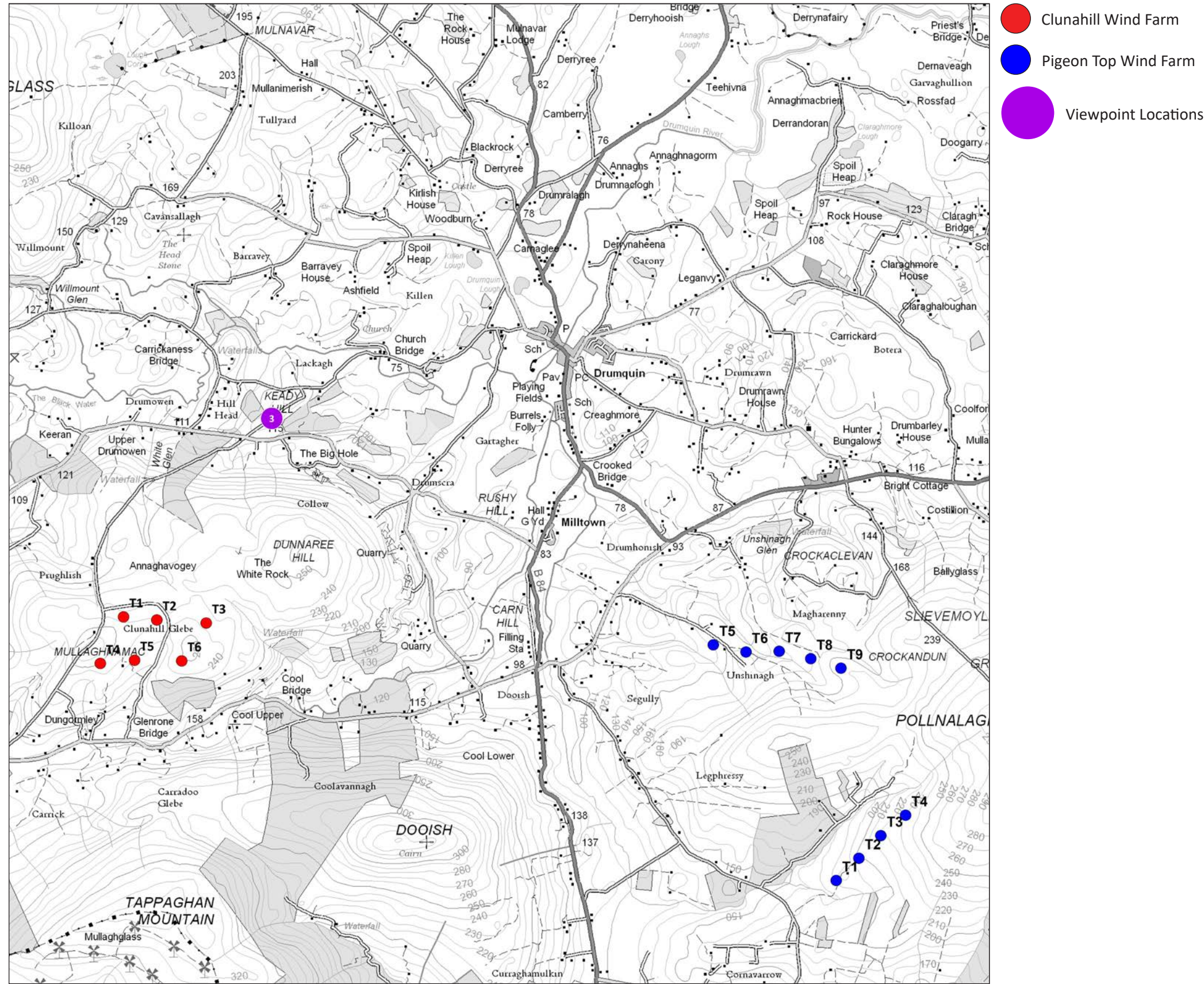
Proposed Wind Farm. Wind Turbines 142.5m tip height

OS reference:	230471 E 375068 N	Horizontal field of view:	53.5° (planar projection)	Camera:	Canon EOS 6D	Proposed Clunahill Wind Turbine Size	
Eye level:	120.5m AOD	Paper size:	541 x 597 mm (A1)	Lens:	50mm (Canon EF 50mm f/1.8)	Hub Height:	84m
Direction of view:	172°	Correct printed image size:	820 x 197.5 mm	Camera height:	1.5m AGL	Blade Diameter:	117m
Distance to Nearest Wind Turbine:	3.3km			Date and time:	21/04/2022 11:15	Overall Height to Tip:	142.5m

Figure 9.0: Viewpoint 2 - Glenbane Road, Barravey
Clunahill Wind Farm, Co. Tyrone



Proposed Wireframe View



OS reference:	230375 E 373665 N
Eye level:	115.5m AOD
Direction of view:	229.5°
Distance to nearest wind turbine:	1.9km (Turbine 3)
Horizontal field of view:	90° (cylindrical projection)
Paper size:	420 x 297 mm (A3)
Correct printed image size:	390 x 94 mm
Camera:	Canon EOS 6D
Lens:	50mm (Canon EF 50mm f/1.8)
Camera height:	1.5m AGL
Date and time:	21/04/2022 11:56
Weather conditions:	Bright and Clear

Proposed Clunahill Wind Turbine Size	
Hub Height:	84m
Blade Diameter:	117m
Overall Height to Tip:	142.5m

Figure 10.0: Viewpoint 3 - Glenbane Road, Keady Hill
Clunahill Wind Farm, Co. Tyrone



Existing View



Proposed View

OS reference:	230375 E 373665 N	Horizontal field of view:	90° (planar projection)	Camera:	Canon EOS 6D	Proposed Clunahill Wind Turbine Size	
Eye level:	115.5m AOD	Paper size:	541 x 597 mm (A1)	Lens:	50mm (Canon EF 50mm f/1.8)	Hub Height:	84m
Direction of view:	229.5°	Correct printed image size:	820 x 162 mm	Camera height:	1.5m AGL	Blade Diameter:	117m
Distance to Nearest Wind Turbine:	1.9km			Date and time:	21/04/2022 11:56	Overall Height to Tip:	142.5m

Figure 11.0: Viewpoint 3 - Glenbane Road, Keady Hill
Clunahill Wind Farm, Co. Tyrone



Existing View



Proposed View

OS reference:	230375 E 373665 N	Horizontal field of view:	53.5° (planar projection)	Camera:	Canon EOS 6D	Proposed Clunahill Wind Turbine Size	
Eye level:	115.5m AOD	Paper size:	541 x 597 mm (A1)	Lens:	50mm (Canon EF 50mm f/1.8)	Hub Height:	84m
Direction of view:	229.5°	Correct printed image size:	820 x 197.5 mm	Camera height:	1.5m AGL	Blade Diameter:	117m
Distance to Nearest Wind Turbine:	1.9km			Date and time:	21/04/2022 11:56	Overall Height to Tip:	142.5m

Figure 12.0: Viewpoint 3 - Glenbane Road, Keady Hill
Clunahill Wind Farm, Co. Tyrone



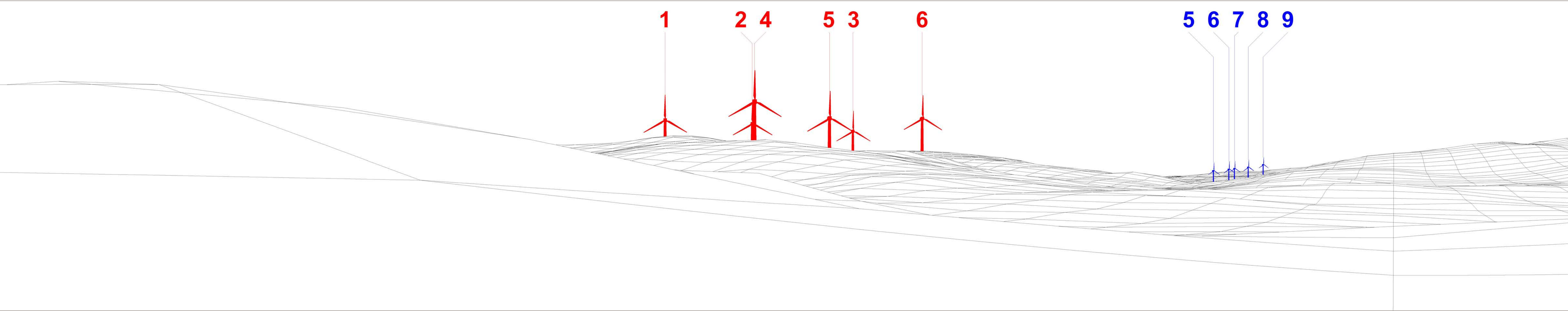
Consented Wind Farm as per Planning Reference - K/2007/0547/F. Wind Turbines 100m tip height



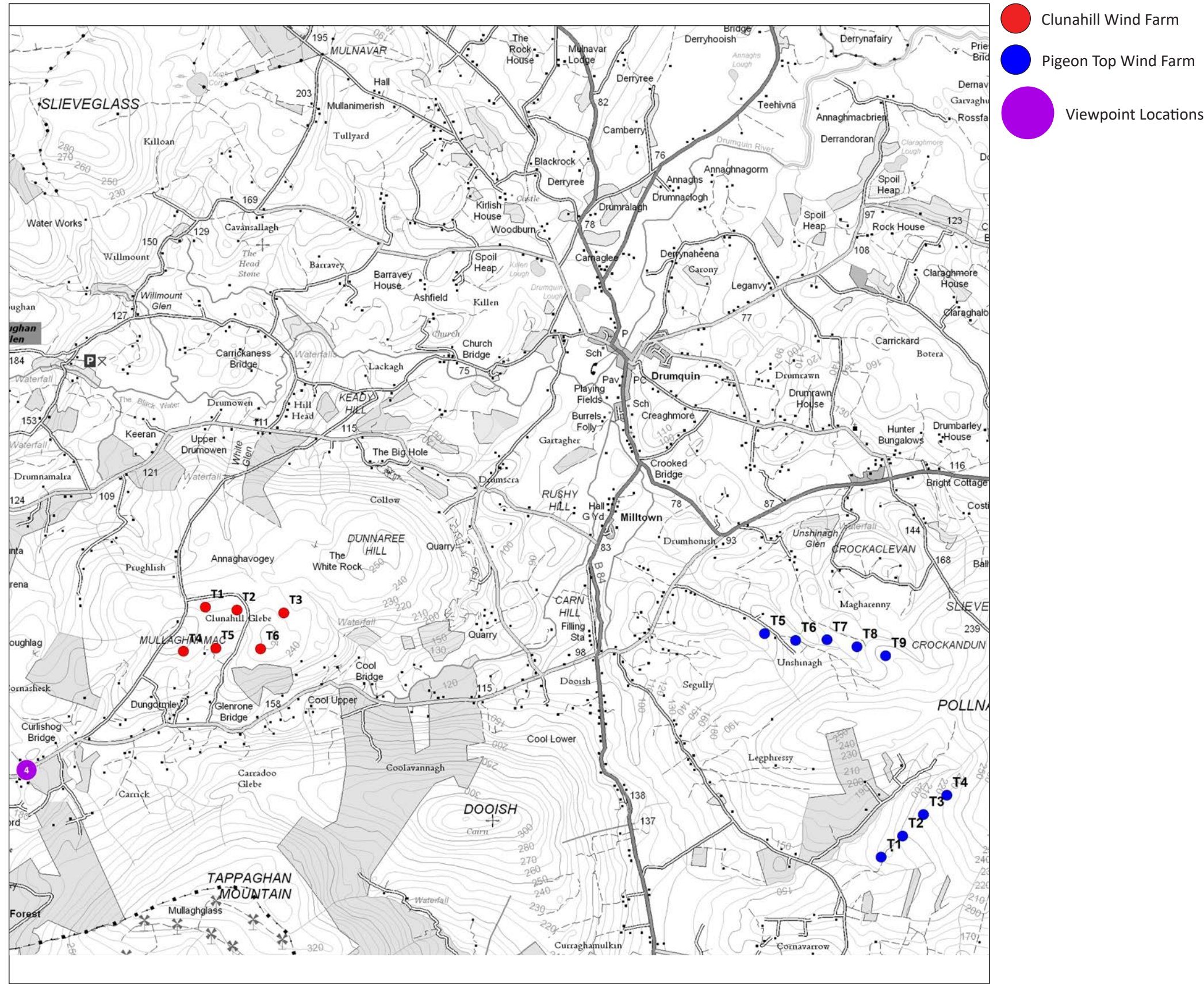
Proposed Wind Farm. Wind Turbines 142.5m tip height

OS reference:	230375 E 373665 N	Horizontal field of view:	53.5° (planar projection)	Camera:	Canon EOS 6D	Proposed Clunahill Wind Turbine Size	
Eye level:	115.5m AOD	Paper size:	541 x 597 mm (A1)	Lens:	50mm (Canon EF 50mm f/1.8)	Hub Height:	84m
Direction of view:	229.5°	Correct printed image size:	820 x 197.5 mm	Camera height:	1.5m AGL	Blade Diameter:	117m
Distance to Nearest Wind Turbine:	1.9km			Date and time:	21/04/2022 11:56	Overall Height to Tip:	142.5m

Figure 13.0: Viewpoint 3 - Glenbane Road, Keady Hill
Clunahill Wind Farm, Co. Tyrone



Proposed Wireframe View



OS reference:	227317 E 370300 N
Eye level:	188.5m AOD
Direction of view:	47.5°
Distance to nearest wind turbine:	1.8km (Turbine 4)
Horizontal field of view:	90° (cylindrical projection)
Paper size:	420 x 297 mm (A3)
Correct printed image size:	390 x 94 mm
Camera:	Canon EOS 6D
Lens:	50mm (Canon EF 50mm f/1.8)
Camera height:	1.5m AGL
Date and time:	21/04/2022 13:23
Weather conditions:	Bright and Clear

Proposed Clunahill Wind Turbine Size	
Hub Height:	84m
Blade Diameter:	117m
Overall Height to Tip:	142.5m

Figure 14.0: Viewpoint 4 - Glen Road
Clunahill Wind Farm, Co. Tyrone



Existing View



Proposed View

OS reference:	227317 E 370300 N	Horizontal field of view:	90° (planar projection)	Camera:	Canon EOS 6D	Proposed Clunahill Wind Turbine Size	
Eye level:	188.5m AOD	Paper size:	541 x 597 mm (A1)	Lens:	50mm (Canon EF 50mm f/1.8)	Hub Height:	84m
Direction of view:	47.5°	Correct printed image size:	820 x 162 mm	Camera height:	1.5m AGL	Blade Diameter:	117m
Distance to Nearest Wind Turbine:	1.8km			Date and time:	21/04/2022 13:23	Overall Height to Tip:	142.5m

Figure 15.0: Viewpoint 4 - Glen Road
Clunahill Wind Farm, Co. Tyrone



Existing View



Proposed View

OS reference:	227317 E 370300 N	Horizontal field of view:	53.5° (planar projection)	Camera:	Canon EOS 6D	Proposed Clunahill Wind Turbine Size	
Eye level:	188.5m AOD	Paper size:	541 x 597 mm (A1)	Lens:	50mm (Canon EF 50mm f/1.8)	Hub Height:	84m
Direction of view:	47.5°	Correct printed image size:	820 x 197.5 mm	Camera height:	1.5m AGL	Blade Diameter:	117m
Distance to Nearest Wind Turbine:	1.8km			Date and time:	21/04/2022 13:23	Overall Height to Tip:	142.5m

Figure 16.0: Viewpoint 4 - Glen Road
Clunahill Wind Farm, Co. Tyrone



Consented Wind Farm as per Planning Reference - K/2007/0547/F. Wind Turbines 100m tip height



Proposed Wind Farm. Wind Turbines 142.5m tip height

OS reference:	227317 E 370300 N	Horizontal field of view:	53.5° (planar projection)	Camera:	Canon EOS 6D	Proposed Clunahill Wind Turbine Size	
Eye level:	188.5m AOD	Paper size:	541 x 597 mm (A1)	Lens:	50mm (Canon EF 50mm f/1.8)	Hub Height:	84m
Direction of view:	47.5°	Correct printed image size:	820 x 197.5 mm	Camera height:	1.5m AGL	Blade Diameter:	117m
Distance to Nearest Wind Turbine:	1.8km			Date and time:	21/04/2022 13:23	Overall Height to Tip:	142.5m

Figure 17.0: Viewpoint 4 - Glen Road
Clunahill Wind Farm, Co. Tyrone



Existing View



Proposed View

OS reference:	228720 E 370723 N	Horizontal field of view:	90° (planar projection)	Camera:	Canon EOS 5D Mark IV	Proposed Clunahill Wind Turbine Size	
Eye level:	171.5m AOD	Paper size:	541 x 597 mm (A1)	Lens:	50mm (Canon EF 50mm f/1.8)	Hub Height:	84m
Direction of view:	31°	Correct printed image size:	820 x 162 mm	Camera height:	1.5m AGL	Blade Diameter:	117m
Distance to Nearest Wind Turbine:	721m			Date and time:	28/10/2022 11:21	Overall Height to Tip:	142.5m

Figure 18.0: Viewpoint 5 - Glen Road
Clunahill Wind Farm, Co. Tyrone



Consented Wind Farm as per planning permission K/2007/0547/F



Proposed View

OS reference:	228720 E 370723 N	Horizontal field of view:	90° (planar projection)	Camera:	Canon EOS 5D Mark IV
Eye level:	171.5m AOD	Paper size:	541 x 597 mm (A1)	Lens:	50mm (Canon EF 50mm f/1.8)
Direction of view:	31°	Correct printed image size:	820 x 162 mm	Camera height:	1.5m AGL
Distance to Nearest Wind Turbine:	721m			Date and time:	28/10/2022 11:21

Figure 19.0: Viewpoint 5 - Glen Road
Clunahill Wind Farm, Co. Tyrone



Existing View



Proposed View

OS reference:	230826 E 370924 N	Horizontal field of view:	90° (planar projection)	Camera:	Canon EOS 5D Mark IV	Proposed Clunahill Wind Turbine Size	
Eye level:	124.5m AOD	Paper size:	541 x 597 mm (A1)	Lens:	50mm (Canon EF 50mm f/1.8)	Hub Height:	84m
Direction of view:	318.5°	Correct printed image size:	820 x 162 mm	Camera height:	1.5m AGL	Blade Diameter:	117m
Distance to Nearest Wind Turbine:	1.3km			Date and time:	28/10/2022 11:35	Overall Height to Tip:	142.5m

Figure 20.0: Viewpoint 6 - Glen Road
Clunahill Wind Farm, Co. Tyrone



Existing View



Proposed View

OS reference:	230826 E 370924 N	Horizontal field of view:	53.5° (planar projection)	Camera:	Canon EOS 5D Mark IV	Proposed Clunahill Wind Turbine Size	
Eye level:	124.5m AOD	Paper size:	541 x 597 mm (A1)	Lens:	50mm (Canon EF 50mm f/1.8)	Hub Height:	84m
Direction of view:	318.5°	Correct printed image size:	820 x 162 mm	Camera height:	1.5m AGL	Blade Diameter:	117m
Distance to Nearest Wind Turbine:	1.3km			Date and time:	28/10/2022 11:35	Overall Height to Tip:	142.5m

Figure 21.0: Viewpoint 6 - Glen Road
Clunahill Wind Farm, Co. Tyrone



Consented Wind Farm as per planning permission K/2007/0547/F



Proposed View

OS reference:	230826 E 370924 N	Horizontal field of view:	53.5° (planar projection)	Camera:	Canon EOS 5D Mark IV	Proposed Clunahill Wind Turbine Size	
Eye level:	124.5m AOD	Paper size:	541 x 597 mm (A1)	Lens:	50mm (Canon EF 50mm f/1.8)	Hub Height:	84m
Direction of view:	318.5°	Correct printed image size:	820 x 162 mm	Camera height:	1.5m AGL	Blade Diameter:	117m
Distance to Nearest Wind Turbine:	1.3km			Date and time:	28/10/2022 11:35	Overall Height to Tip:	142.5m

Figure 22.0: Viewpoint 6 - Glen Road
Clunahill Wind Farm, Co. Tyrone



Head Office

Hawarden House
163 Upper Newtownards Road
Belfast BT4 3HZ

Other offices in London and Dublin

T: +44 (0)28 9029 8020

E: info@parkhood.com

parkhood.com