

About Energia Group



Powering the energy transition

Energia Group is a leading, integrated Irish energy business committed to powering the energy transition. We supply almost 21% of the island of Ireland's total electricity requirements and 25% of the island's total wind power, meeting the energy needs of 800,000 homes and businesses with electricity and gas services provided through our two retail brands, Energia and Power NI.

Experts in renewable energy

We've set clear targets to halve the carbon intensity of our electricity generation and increase by a factor of three the volume of renewable electricity we generate across the island of Ireland by 2030. Our ongoing €3bn 'Positive Energy' investment programme is developing onshore and offshore wind, battery storage, green hydrogen production and solar PV installations, facilitating the achievement of Climate Action targets.

Sustainability

We have aligned our responsible business activities with the UN's Sustainable Development Goals. We are a Business Supporter of the All-Ireland Pollinator Plan, protecting wildflower and bogland habitats and promoting pollinator-friendly land management methods on our wind farms and other renewable energy projects.

Community focus

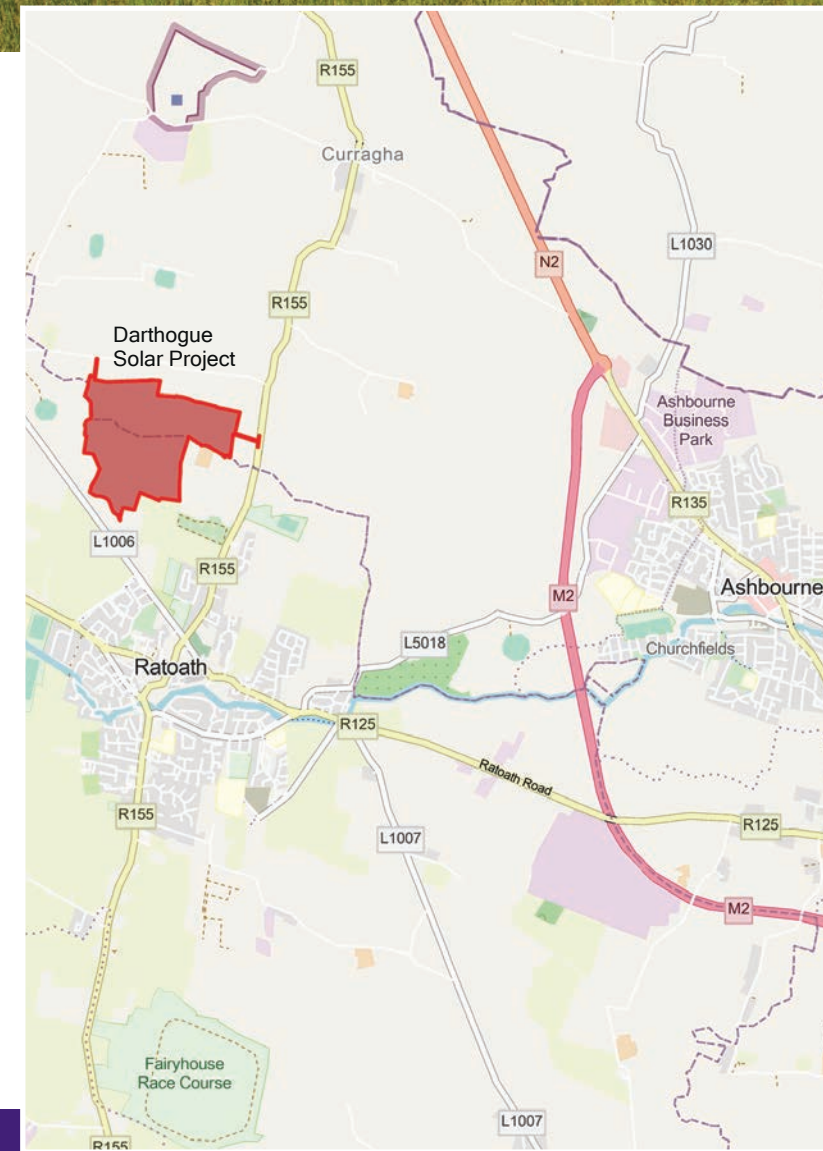
We pride ourselves on our reputation for being a responsible developer and good neighbour in the communities where we operate. We work with local community groups and projects through our community benefit funds and are happy to facilitate school visits and classroom talks.

To find out more about Energia Group, our renewable energy projects and community benefit funds, visit our website: www.energiagroup.com/renewables.

energia group

Proposed amendments to consented Darthogue solar PV development

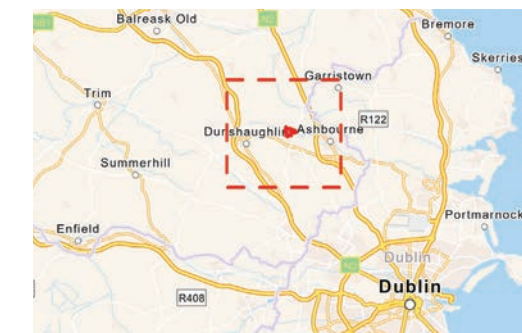
Townland of Darthogue near Ratoath, Co. Meath



The Darthogue solar farm project is situated in the townland of Darthogue, near Ratoath in County Meath. Planning permission was granted in 2020 for a solar development with an export capacity of 47 MW, generating enough renewable electricity to meet the average electricity needs of more than 26,000 Irish households every year.

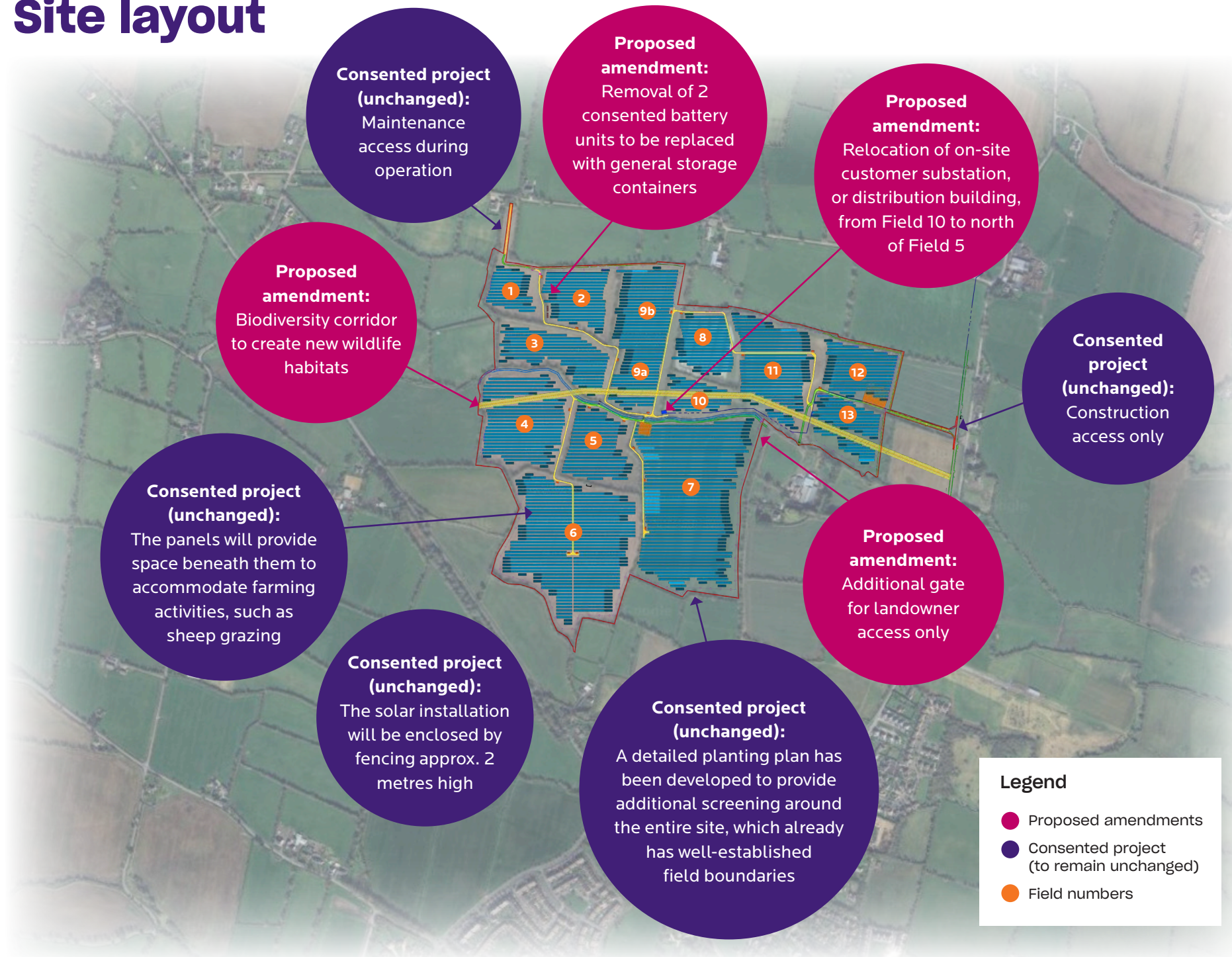
Energia Group has continued to work on plans for the site and we are currently finalising a series of proposed minor design amendments to the original planning application. **However, the site size and boundary remain unchanged.**

Proposed amendments include the relocation of the on-site substation, or distribution building, the creation of a biodiversity corridor and the removal of two consented battery units and replacement with general storage containers.



energia group

Site layout



Proposed planning amendments

- Removal of 2 consented battery units to be replaced with general storage containers for equipment
- Relocation of on-site customer substation, or distribution building
- Extensive biodiversity corridor with wildflower planting along existing Gas Network Ireland corridor to create new habitats, enhance biodiversity and support wildlife
- Additional gate located with consented fencing to allow landowner access only (not to be used for solar farm construction or operation)
- Extension of planning permission duration from 5 years to 10 years (period of time given for the start of construction)

Project FAQs

Why are these amendments necessary?

The 47 MW Darthogue solar project was granted planning permission in 2020. We are now preparing to submit a number of proposed minor design amendments to the original planning application within the consented site boundary, which remains unchanged. Site notices will be erected prior to the submission of the planning application for these amendments.

Why is this project important?

The Irish Government has declared a climate emergency and its 2030 Climate Action Plan has set ambitious targets for decarbonisation through increased levels of renewable energy generation. Solar energy will play an important role in achieving these targets.

Site statistics

The Darthogue solar farm will have an export capacity of 47 MW, generating enough renewable electricity to meet the average electricity needs of more than 12,500 Irish households every year, while saving around 15,000 tonnes of CO2 emissions. That's the equivalent of taking up to 8,000 cars off the road.

What security measures will be used on site?

Consented security measures will remain unchanged. These include outer fencing, approx. 2m high. CCTV cameras will also be in operation but will be strategically positioned to ensure they do not breach residents' privacy.

Construction and traffic

These planning amendments will not extend the consented construction duration. A traffic management plan will be put in place, when the solar installation is being constructed but disruption is expected to be minimal. Once constructed, solar installations require limited maintenance access.